

How to Edit the Mission Components

Mission components give **ATF** important information about the basic orientation of forces. It also tells **Armored Task Force** what conditions the player must meet in order to win the game. Finally, it is one of the places where the Display Name for the scenario is located (the other is with the [OPORD](#)), and the short description of the scenario which is displayed in the opening dialog of **ATF**, when the player is selecting a scenario.

There are three Mission components: Friendly, Enemy, and Neutral. Only the Friendly component needs to be completely filled out. The only important data for the Enemy and Neutral Mission components is the 'Global Direction'. The other entries are not currently implemented or used.

Edit the Friendly Mission Component:

The Friendly Mission is the most important Mission Component. It defines the victory conditions, the win-loss messages, the scenario description, and the friendly global direction. In this example, we are going to set victory conditions for a defensive scenario. An attack victory condition will use the 'Objective Ellipse' to define the ground the player must control to win, instead.

1. Select 'Edit Friendly' from the 'Mission' sub-menu of the 'Component' menu.

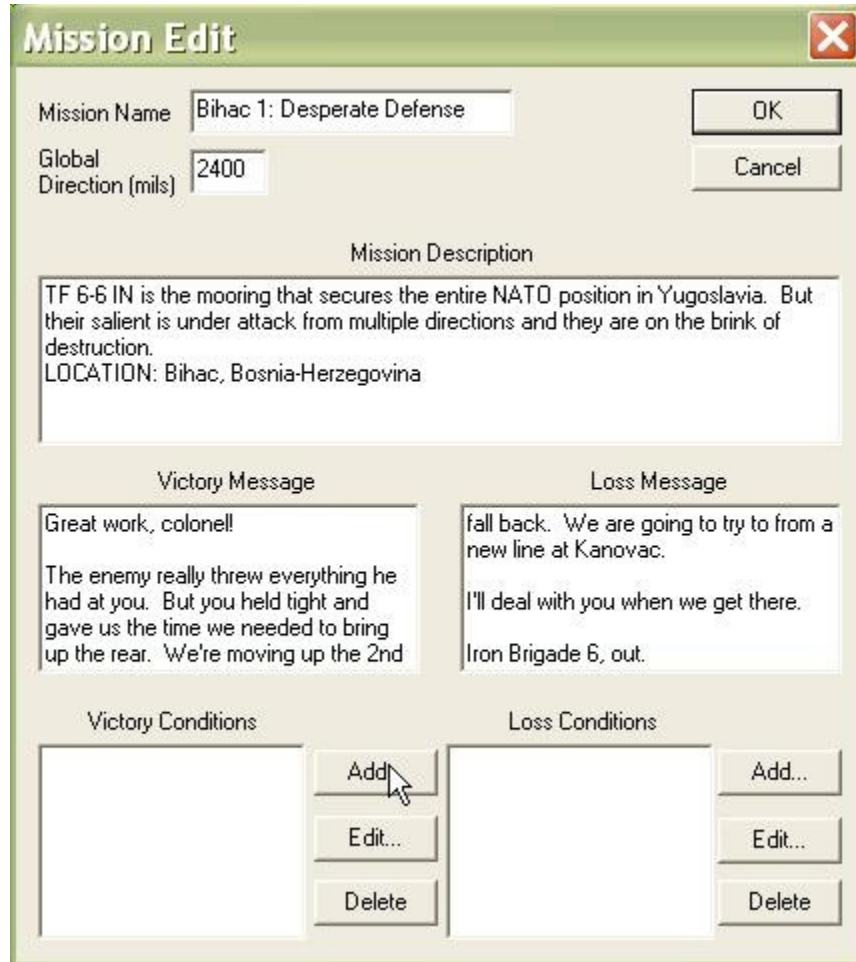


2. Fill out the basic data in the Mission Edit dialog.

- Mission Name. This is filled in automatically by the Scenario Wizard. It is the name displayed in the title bar of **Armored Task Force** when the scenario is loaded. If you wish to change it, you must also change the value in the [OPORD](#) dialog.
- Global Direction. In mils (0-6400, 0 is north, clockwise angle). This is the basic orientation direction of the friendly player's force (the direction of attack or defense to face the enemy).
- Victory Message. This is the message displayed in the Results window if the player wins the mission.

- Loss Message. This is the message displayed in the Results window if the player loses the mission.

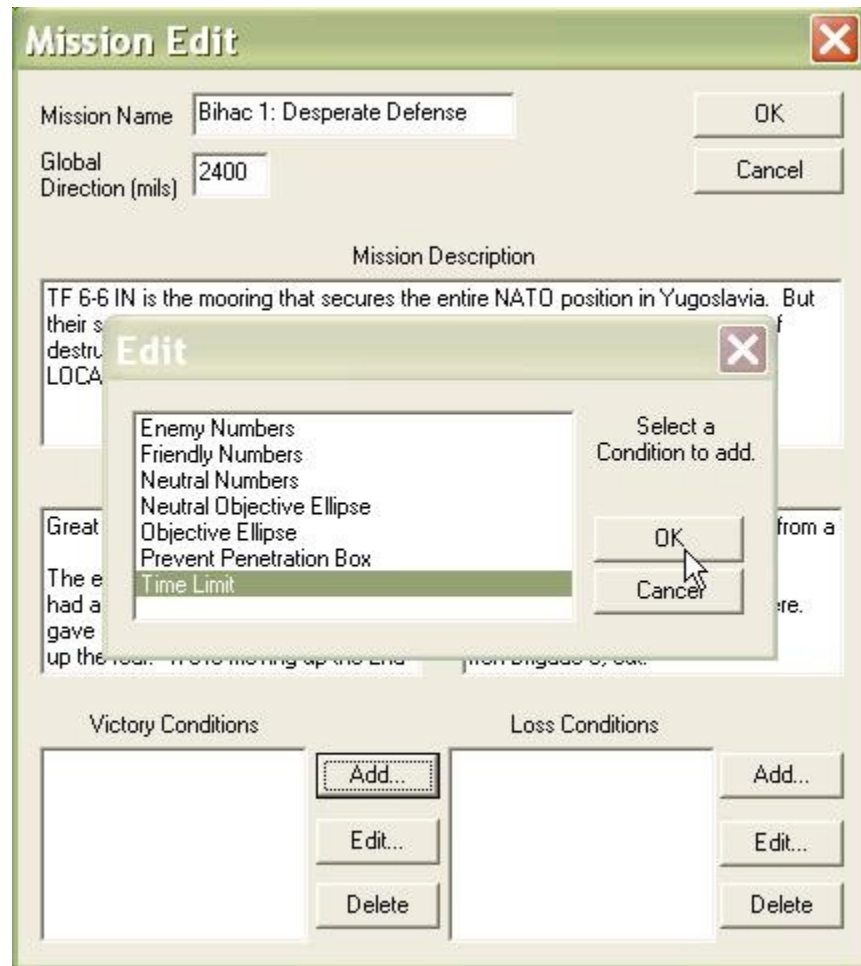
After the form is completed, select 'Add' to begin adding Victory Conditions.



The image shows a 'Mission Edit' dialog box with a green title bar and a close button (X) in the top right corner. The dialog is divided into several sections:

- Mission Name:** A text box containing 'Bihac 1: Desperate Defense'.
- Global Direction (mils):** A text box containing '2400'.
- OK and Cancel buttons:** Located to the right of the Global Direction field.
- Mission Description:** A large text area containing the text: 'TF 6-6 IN is the mooring that secures the entire NATO position in Yugoslavia. But their salient is under attack from multiple directions and they are on the brink of destruction. LOCATION: Bihac, Bosnia-Herzegovina'.
- Victory Message:** A text area containing: 'Great work, colonel! The enemy really threw everything he had at you. But you held tight and gave us the time we needed to bring up the rear. We're moving up the 2nd'.
- Loss Message:** A text area containing: 'fall back. We are going to try to form a new line at Kanovac. I'll deal with you when we get there. Iron Brigade 6, out.'
- Victory Conditions:** An empty list box on the left.
- Loss Conditions:** An empty list box on the right.
- Buttons:** For each list box, there are three buttons: 'Add...', 'Edit...', and 'Delete'.

3. When the 'Time Limit' condition is placed in the Victory Conditions box, it means that the player must 'hold on' until the defined time. When it is in the Loss Conditions box, it means the player must achieve the victory conditions before that time, or he cannot win.



4. Enter the time limit. Since this is in the Victory Conditions box, it means that the player must defend beyond this time.



5. Now we are going to add the Loss Conditions. Before this step, we need to define an ['Event Box'](#).

An Event Box is just a box defined on the ground. It is used by conditions to look at regions of the map.

If you need to define an Event Box, select OK, define the Event Box, and then re-select the 'Edit Friendly' function.

Now select 'Add' from the 'Loss Conditions'

Mission Edit

Mission Name: OK

Global Direction (mils): Cancel

Mission Description

TF 6-6 IN is the mooring that secures the entire NATO position in Yugoslavia. But their salient is under attack from multiple directions and they are on the brink of destruction.
LOCATION: Bihac, Bosnia-Herzegovina

Victory Message

Great work, colonel!

The enemy really threw everything he had at you. But you held tight and gave us the time we needed to bring up the rear. We're moving up the 2nd

Loss Message

What the hell are you doing? We're not ready to defend yet!

Round up whatever you've got left and fall back. We are going to try to form a new line at Kanovac.

Victory Conditions

Time Limit Add... Edit... Delete

Loss Conditions

Add... Edit... Delete

6. The 'Prevent Penetration Box' condition counts the number of enemy units in a defined Event Box and is 'true' when the enemy count is equal to or exceeds the defined number.

Edit

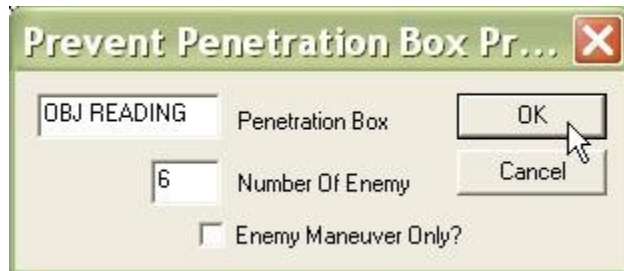
Enemy Numbers
Friendly Numbers
Neutral Numbers
Neutral Objective Ellipse
Objective Ellipse
Prevent Penetration Box
Time Limit

Select a Condition to add.

OK Cancel

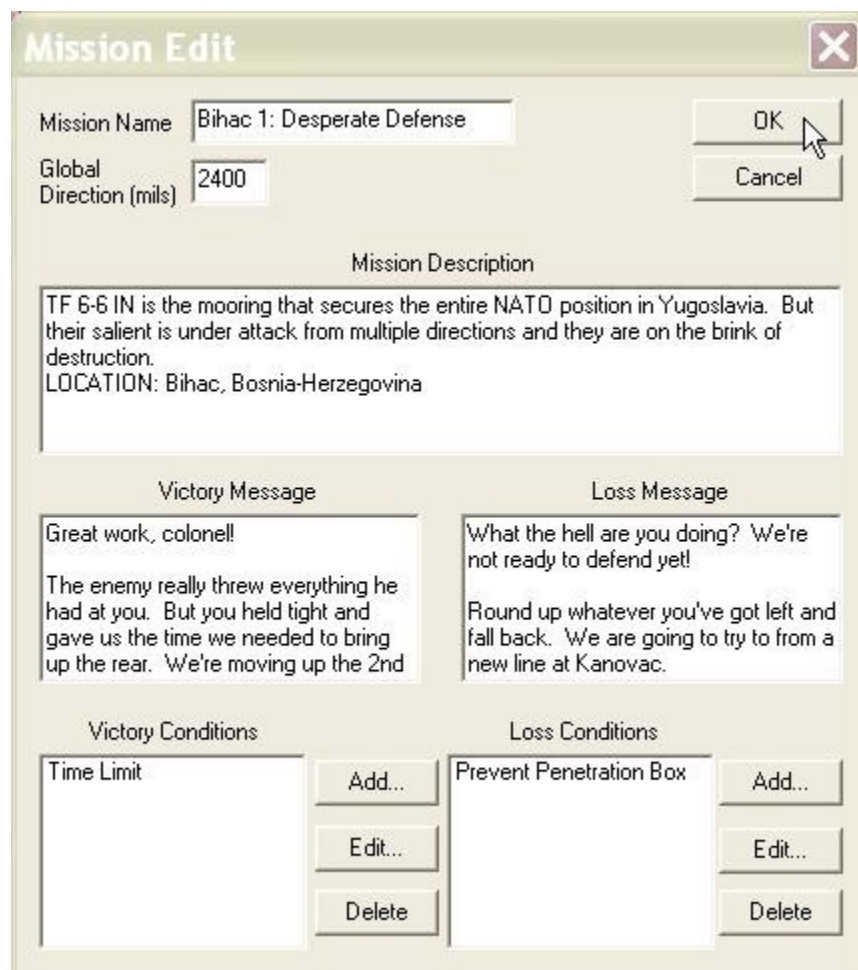
7. Fill out the form for the Prevent Penetration Box.

- Penetration Box. This is the name of the 'No Pen Line'. It is displayed with the Mission Objectives and Results in the 'Results Window'.
- Number of Enemy. When this number of enemy are within the defined box, the Prevent Penetration Box will be 'True'
- Enemy Maneuver Only. When this box is checked, **Armored Task Force** will only count enemy maneuver vehicles, not non-maneuver vehicles such as engineer and artillery units.



A dialog box titled "Prevent Penetration Box Pr..." with a close button (X) in the top right corner. It contains three input fields: "OBJ READING" with the value "6", "Penetration Box" (empty), and "Number Of Enemy" with the value "6". There is a checkbox labeled "Enemy Maneuver Only?" which is currently unchecked. At the bottom right are "OK" and "Cancel" buttons. A mouse cursor is pointing at the "OK" button.

8. We're done! Select 'OK'.



A "Mission Edit" dialog box with a close button (X) in the top right corner. It contains several sections: "Mission Name" with the text "Bihac 1: Desperate Defense", "Global Direction (mils)" with the value "2400", and "Mission Description" with the text "TF 6-6 IN is the mooring that secures the entire NATO position in Yugoslavia. But their salient is under attack from multiple directions and they are on the brink of destruction. LOCATION: Bihac, Bosnia-Herzegovina". Below these are "Victory Message" and "Loss Message" sections, each with a text area containing a message. At the bottom are "Victory Conditions" and "Loss Conditions" sections, each with a list box and buttons for "Add...", "Edit...", and "Delete". The "Victory Conditions" list box contains "Time Limit". The "Loss Conditions" list box contains "Prevent Penetration Box". A mouse cursor is pointing at the "OK" button.

Edit the Neutral and Enemy Mission Components:

The only values used in the Neutral and Enemy Mission Components are the Global Directions. Even if you do not plan on adding Neutral units to the scenario, it is a good idea to fill in the Global Direction (use the same direction as the Friendly Global Direction), in case someone modifies your scenario by adding Neutral units later.

1. Select 'Edit Neutral' from the 'Mission' sub-menu of the 'Component' menu.



2. You do not have to fill out the entire Mission Edit dialog.
 - Mission Name. This is filled in automatically by the Scenario Wizard. It is not used by **Armored Task Force**. Changing it has no effect.
 - Global Direction. In mils (0-6400, 0 is north, clockwise angle). This is the basic orientation direction of the neutral units (the direction of attack or defense to face the enemy). It will normally be the same as the Friendly Global Direction.

Mission Edit

Mission Name:

Global Direction (mils):

Mission Description

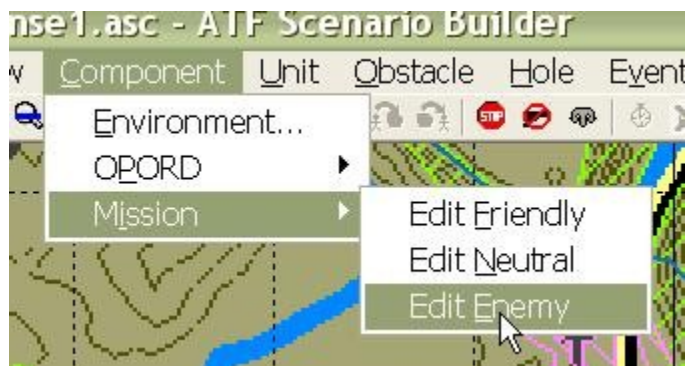
Victory Message

Loss Message

Victory Conditions

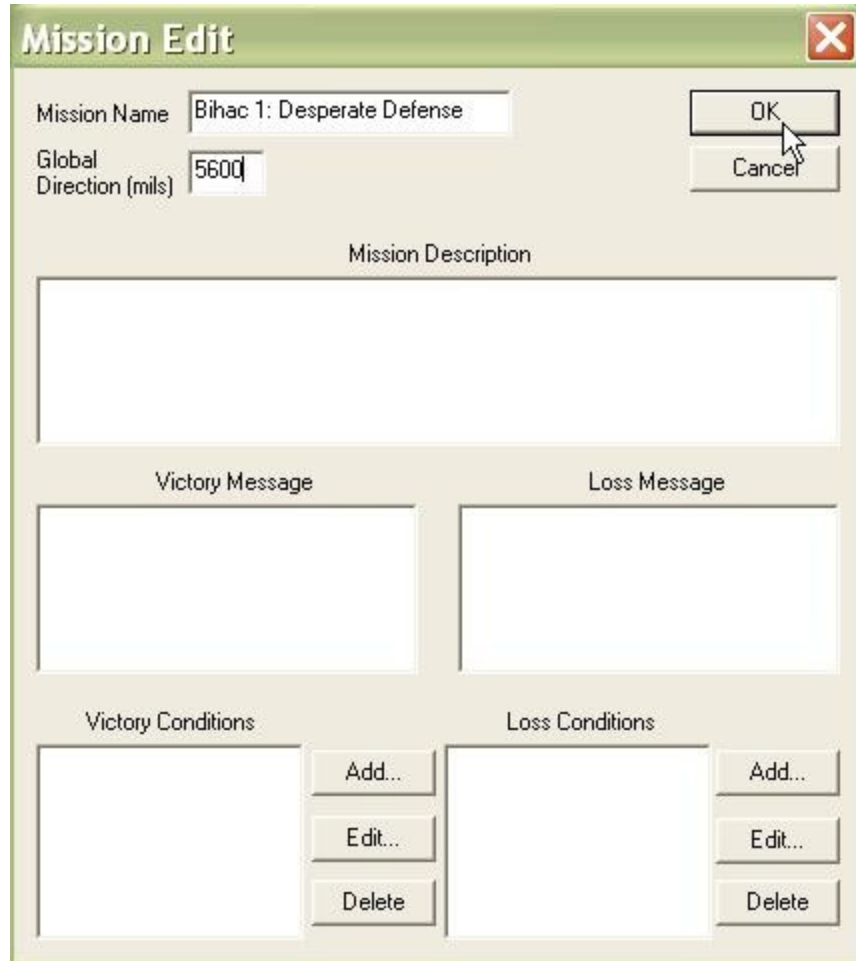
Loss Conditions

3. Select 'Edit Enemy' from the 'Mission' sub-menu of the 'Component' menu.



4. Again, you do not have to fill out the entire Mission Edit dialog.

- Mission Name. This is filled in automatically by the Scenario Wizard. It is not used by **Armored Task Force**. Changing it has no effect.
- Global Direction. In mils (0-6400, 0 is north, clockwise angle). This is the basic orientation direction of the neutral units (the direction of attack or defense to face the player's forces). It will normally be 3200 mils different from the Friendly Global Direction.



The image shows a "Mission Edit" dialog box with a green title bar and a close button (X) in the top right corner. The dialog contains several input fields and buttons:

- Mission Name:** A text box containing "Bihac 1: Desperate Defense".
- Global Direction (mils):** A text box containing "5600".
- Buttons:** "OK" and "Cancel" buttons are located to the right of the input fields.
- Mission Description:** A large empty text area.
- Victory Message:** An empty text area.
- Loss Message:** An empty text area.
- Victory Conditions:** An empty list box with three buttons to its right: "Add...", "Edit...", and "Delete".
- Loss Conditions:** An empty list box with three buttons to its right: "Add...", "Edit...", and "Delete".